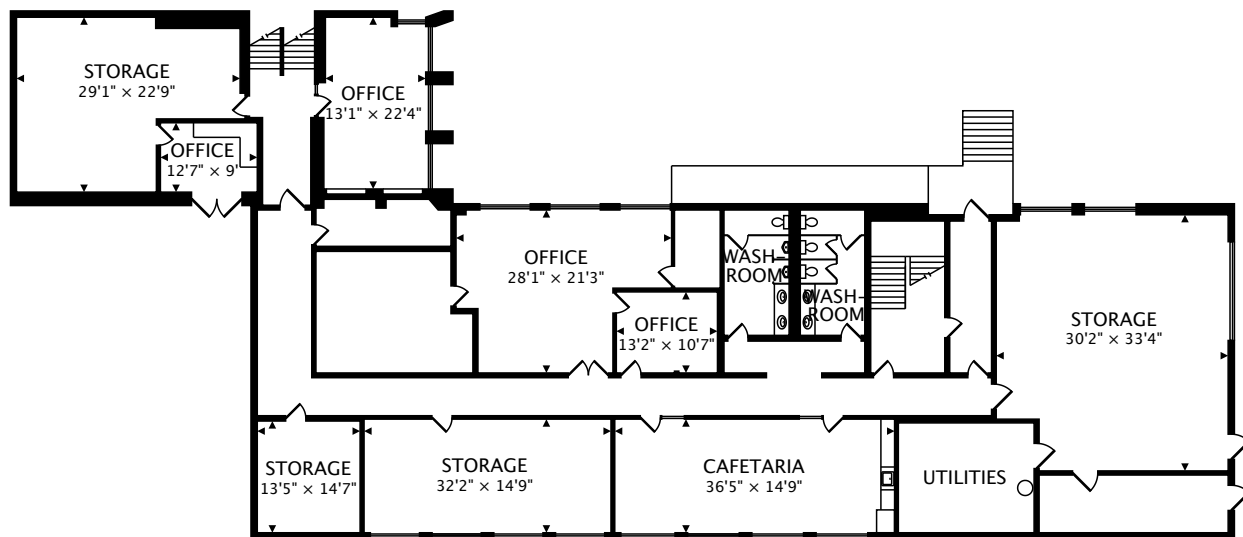


TOTAL
24017 sq ft



CAPTURED ON: 28 JUL 2017
DIMENSIONS, AREAS, LAYOUTS AND DETAILS ARE APPROXIMATE
AND SHOULD BE CONSIDERED ILLUSTRATIVE ONLY.

Eric Riemer
CRE Partners
D: 612-730-4631
eric@creminnesota.com
creminnesota.com



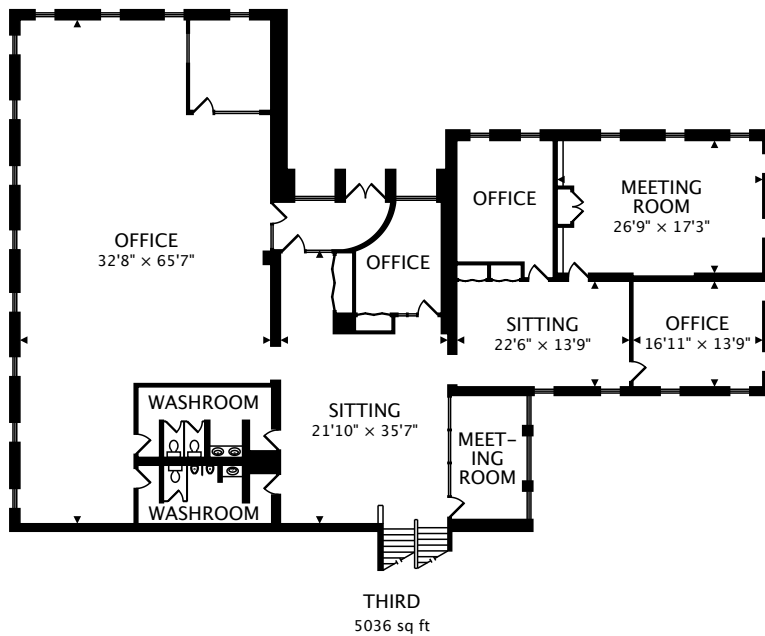
SECOND
7029 sq ft

TOTAL
24017 sq ft



CAPTURED ON: 28 JUL 2017
DIMENSIONS, AREAS, LAYOUTS AND DETAILS ARE APPROXIMATE
AND SHOULD BE CONSIDERED ILLUSTRATIVE ONLY.

Eric Riemer
CRE Partners
D: 612-730-4631
eric@creminnesota.com
creminnesota.com

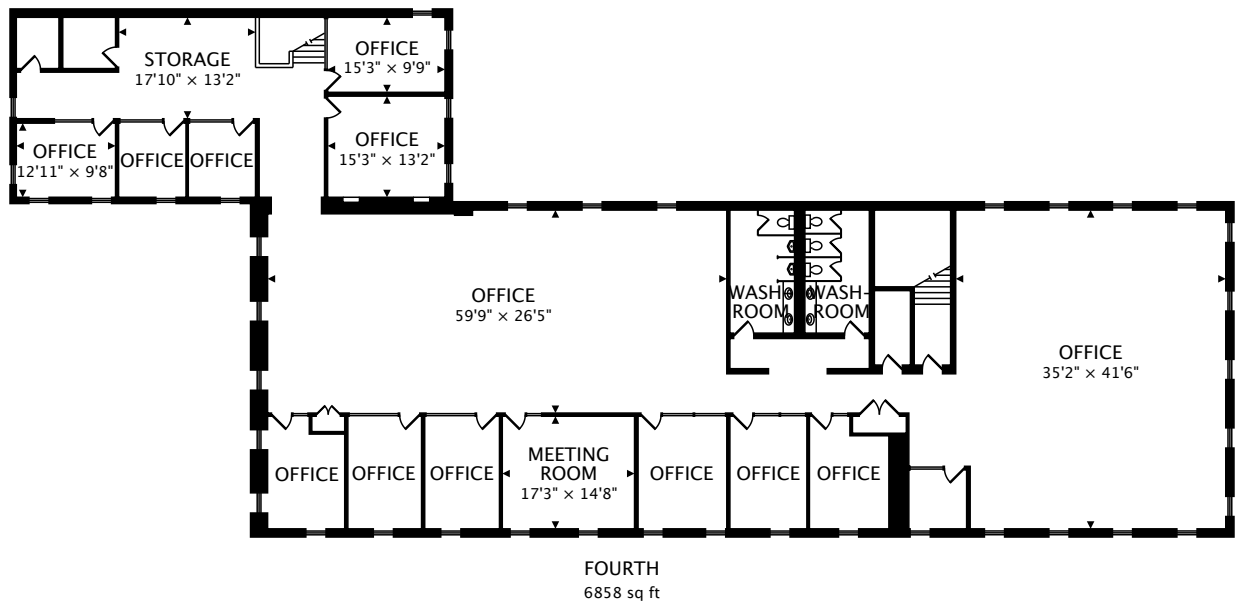


TOTAL
24017 sq ft



CAPTURED ON: 28 JUL 2017
DIMENSIONS, AREAS, LAYOUTS AND DETAILS ARE APPROXIMATE
AND SHOULD BE CONSIDERED ILLUSTRATIVE ONLY.

Eric Riemer
CRE Partners
D: 612-730-4631
eric@creminnesota.com
creminnesota.com



FOURTH
6858 sq ft

TOTAL
24017 sq ft



CAPTURED ON: 28 JUL 2017
DIMENSIONS, AREAS, LAYOUTS AND DETAILS ARE APPROXIMATE
AND SHOULD BE CONSIDERED ILLUSTRATIVE ONLY.

Eric Riemer
CRE Partners
D: 612-730-4631
eric@creminnesota.com
creminnesota.com